

FERRALERT™ F.I.L.M.

FERROMAGNETIC INCIDENT LOG MANAGER



An Automatic Data Recorder of Ferromagnetic Objects entering the MRI Scanner Room

- Logs potential and actual projectile incidents
- Provides a visual record of the events leading up to the incident
- Provides a visual record of the actions after the incident
- All records of incidents are date and time stamped
- Assists with Root Cause Analysis
- Facilitates The Joint Commission compliance for Incident Logging
- Patent Pending
- HIPAA compliant

KOPP →
Development Inc.

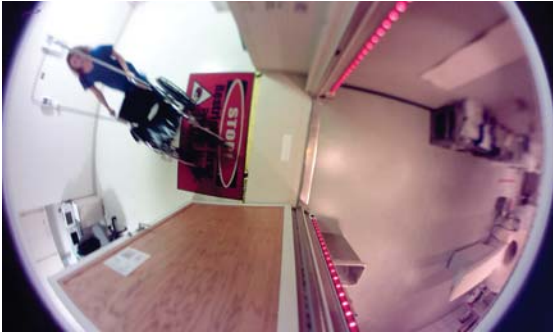
Designed & Manufactured
in the U.S.A.



F.I.L.M. 150706

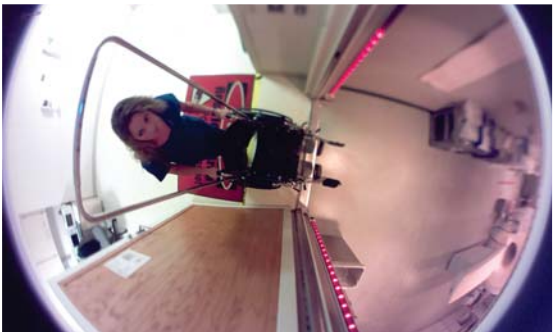
FerrAlert™ F.I.L.M. Function:

The FerrAlert™ Ferromagnetic Incident Log Manager, *F.I.L.M.*, is located at the doorway of the MRI magnet room. The imaging system is configured and positioned in a location to allow simultaneous viewing inside the MRI scanner room as well as the approach to the scanner room. Shown below are a few sample of images from one date and time stamped log:



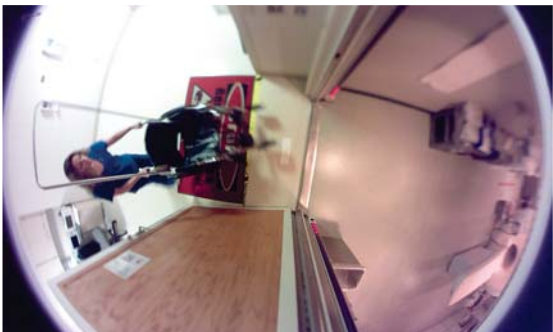
Visual Advance Pre-warning:

All 48 red alarm lights of FerrAlert™ HALO" PLUS are activated on the approach of a ferromagnetic wheelchair WELL OUTSIDE scanner room. No Audio alarm sounds at this time.



Audio alarm and F.I.L.M. are activated:

When the Photoelectric sensor of the FerrAlert™ HALO" PLUS is crossed, the *F.I.L.M.* stores the images that lead up to the activation. *F.I.L.M.* continues to take and store images after the incident occurs to document actions after the incident.



Location of the projectile threat pinpointed:

In this image, both bottom sensors are activated indicating that the area of the threat is near the floor and quite large. The location feature allows determination of the position of hidden ferromagnetic objects for post incident data analysis.



Action taken after incident:

The person did not continue into the scanner room, but instead turned around and left the area. The green READY lights illuminate indicating that there is no approaching ferromagnetic threat.

Specifications

Dimensions: Height: 3.153" (80.09mm); Width: 3.951" (100.36mm);
Depth: 3.830" (97.29mm)

Mounting: Mounts on FerrAlert™ HALO" PLUS Portal
or Separate Mounting Bracket
(when FerrAlert is Inside MRI Room)

Complies with IEC 60601-1:2005 Medical Device Specification Requirements

Medical Power Supply: 100 to 240 VAC, 47 to 63 Hz, 25 Watts

Data connection: USB port



Phone 772-225-6932

Toll Free 888-838-KOPP (5677)

Web Address: www.koppdevelopment.com

Email: info@koppdevelopment.com